

McARDLE LABORATORY **For CANCER RESEARCH**

Winter 2020 McArdle Laboratory Newsletter

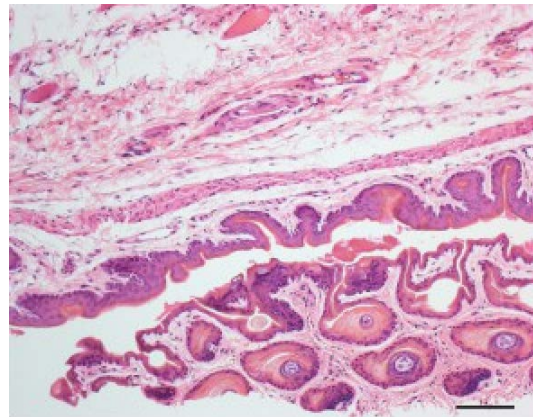
This quarterly newsletter is designed to keep our friends and alumni up-to-date with the happenings at the McArdle Laboratory for Cancer Research as we continue in our mission to understand and fight cancer while educating the next generation of cancer researchers.



Groundbreaking study

McArdle researchers have developed a model of papillomavirus sexual transmission using the recently discovered murine (mouse) papillomavirus, with important implications for studying HPV transmission dynamics and cervical cancer.

[Full story](#)



[Subscribe](#)[Past Issues](#)[Translate ▼](#)

Receiving three federal grants from the National Institutes of Health (NIH) within a year is nearly unheard of in the research world, but not for Dr. Shannon Kenney, who was awarded two grants from the National Cancer Institute (NCI) and a third from the National Institute of Allergy and Infectious Diseases (NIAID) within a calendar year!

[Learn more](#)

Spreading the science

On Saturday, September 14th, volunteers from the McArdle Laboratory and the Institute for Molecular Virology teamed up to teach children and families from the community about viruses and cancer at the Morgridge Institute's Saturday Science at Discovery event.



[More on the event](#)



Skin and guts!

Recent discoveries from Caroline Alexander and Ildiko Kasza suggest that skin might be a more important player in metabolism than previously understood.

[Learn more](#)

Finally, a big thank you to everyone who helped organize and attended the 2020 Night of Hope event!

Despite blizzard-like conditions, there was still a great turnout for the January 17 event which raised money for basic cancer research at McArdle. Read more about the history of the event [here](#).

Subscribe

Past Issues

Translate ▼

Copyright © 2019 McArdle Laboratory for Cancer Research, All rights reserved.

Email us:

communications@oncology.wisc.edu

Want to change how you receive these emails?
You can update your preferences or unsubscribe from this list.

This email was sent to <<Email Address>>

[why did I get this?](#) [unsubscribe from this list](#) [update subscription preferences](#)

The McArdle Laboratory for Cancer Research · 1111 Highland Ave · Madison, WI 53705-2275 · USA

