

McARDLE LABORATORY **For CANCER RESEARCH**

Welcome to the McArdle Laboratory newsletter!

This newsletter is designed to keep our friends and alumni up-to-date with the goings-on at the McArdle Laboratory for Cancer Research as we continue in our mission to understand and fight cancer and to educate the next generation of cancer researchers.



New faculty spotlight!

Dr. Aussie Suzuki is the newest member of the McArdle Laboratory faculty. His research uses cutting-edge microscopy techniques to study one of the most fundamental aspects of all cancers: cell division.

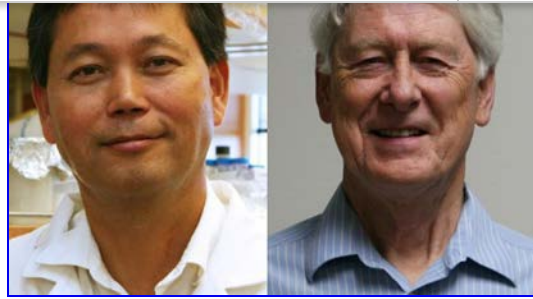
[Meet Dr. Suzuki](#)



[Subscribe](#)[Past Issues](#)[Translate ▼](#)

Dr. Shigeki Miyamoto and Dr. Richard Burgess are collaborating with Salus Discovery on a novel method of discovering weak and previously inaccessible protein interactions.

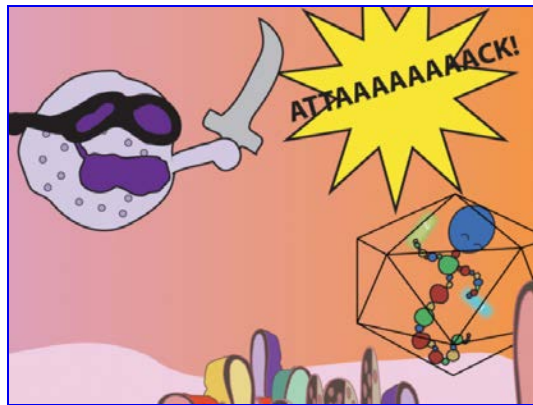
[Keep reading](#)



Picture that

Graduate students at the McArdle Laboratory are using comic strips to present science in a more captivating way to young students.

[Learn more about their amazing work](#)



Bridging the gap

A generous donation from the estate of Mrs. Ruth Birge has helped to provide crucial pilot and bridge funding to support the extraordinary researchers at McArdle.

[Get the scoop](#)



Copyright © 2019 McArdle Laboratory for Cancer Research, All rights reserved.

Are you an alumni or friend of McArdle with exciting news to share? We'd love to hear from you!

Email us: communications@oncology.wisc.edu

Want to change how you receive these emails?
You can update your preferences or unsubscribe from this list.

Subscribe

Past Issues

Translate ▼

This email was sent to <<Email Address>>

[why did I get this?](#) [unsubscribe from this list](#) [update subscription preferences](#)

The McArdle Laboratory for Cancer Research · 1111 Highland Ave · Madison, WI 53705-2275 · USA

